

680 SERIES "BULLDOG" 240/208 VOLT FAN FORCED PORTABLE UNIT HEATER



- Operates on 240V or 208V electrical service
- Finned steel tubular heating element
- Internal manual reset thermal cut-out
- 6' long cord with molded plug
- Temperature control thermostat with 35°F to 85°F range
- 10' air throw - 262 CFM
- Width: 13 1/2", Height 17 1/2", Depth 11 1/2"
- Imported to TPI Corporation specifications



30 AMP Plug
NEMA #6-30P

Swivel base allows unit to be wall, floor, or ceiling mounted.



MFG MODEL	WATTS	MAX BTUs	VOLTS	PHASE	AMPS	TEMP RISE	WT. (LBS)	PRICE EACH
HF686TC	5600 / 4200	19107 / 14330	240 / 208	1	23.4 / 20.2	75°F	20	260

5800 SERIES FAN FORCED GARAGE / SHOP HEATER

- Up to 4800 Watts of heating comfort for garage or utility room applications
- 4000 Watts available for smaller areas.
- Built in bi-metal double pole thermostat - 50°F - 90°F range.
- 6' long cord with molded plug
- Steel tubular heating element
- Wall/Ceiling bracket included
- Manual reset standard
- Power on and overheat pilot lights
- Imported to TPI Corporation specifications

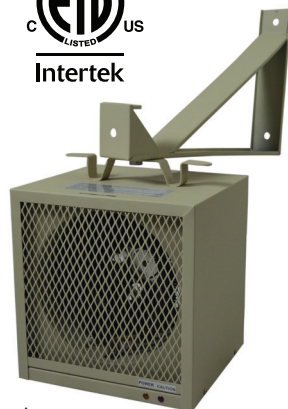
DIMENSIONS
Heater: 10 5/8" x 11 x 9 5/8"
Bracket: 2 1/2" x 10 x 14



HF584TC
20 AMP Plug
NEMA #6-20P



HF5848TC
30 AMP Plug
NEMA #6-30P



Adjustable thermostat on back

MFG MODEL	WATTS	MAX BTUs	VOLTS	AMPS	WT. (LBS)	PRICE EACH
HF5840TC	4000/3000	13652	240 / 208	16.6 / 14.4	17	133
HF5848TC	4800/3600	15086		20 / 17.3		176

120V PORTABLE ELECTRIC HEATERS



188 TASA
\$52.00



178 TMC
\$78.00



198 TMC
\$87.00

- Agency approved for indoor residential, commercial & industrial areas
- All steel construction with powder coated finish
- 120-Volt, single phase operation; ready for pull-in operation
- Cord set; black 16/3 SJT, 6' long with NEMA 5-15 grounded plug

MFG MODEL	WATTS	MAX BTUs	VOLTS	AMPS	# HEAT SETTINGS	AGENCY LISTING	WEIGHT (LBS)
188-TASA	1500 / 1300	5,120	120	12.5	2	ETL C/US	9
178-TMC	1500 / 950				2	UL C/US	8
198-TMC	1500 / 900 / 750				3	ETL C/US	9

© Copyright 2016-17; TPI Corporation
1-800-682-3398 | 1-423-477-4131
www.tpicorp.com | answers@tpicorp.com



© Copyright 2016-17; TPI Corporation | 1-800-682-3398 | 1-423-477-4131 | www.tpicorp.com | answers@tpicorp.com

2017 WINTER SALE

PORTABLE ELECTRIC INDOOR FAN FORCED HEATERS



FES SERIES HEATWAVE SALAMANDER

- Safety yellow heater enclosure with safety screens on both air intake and output openings.
- Optional 25' long SO type cord, ready for plug attachment is available for each model.
- Long-life finned tubular heating elements.
- Thermostat adjustment 40° to 100° F.
- High-limit thermal cutout switch / Automatic reset.
- Housing (15/30KW) features 90° pivot adjustment from center axis
- 10" wheels and heavy-duty handle / wheel-base assembly for easy portability over all surface types
- 800 CFM: 15KW, 1100 CFM: 30KW; 2200 CFM: 45KW
- Shipped fully assembled
- Made in U.S.A.



**NO OPEN FLAMES
NO DEADLY FUMES TO VENT
NO "OUT OF FUEL" SHUT-DOWNS**

Provides temporary climate control for interior job site heating applications!

Can be operated unattended!

Clean, quiet & safe electric heat!



FES SIZING CHART	
UNIT	MAX SQ. FT.
15KW	1000 up to 1500
30 KW	1500 up to 2000
45KW	2000 up to 2400

Use in areas with ceiling heights less than 15'.

MFG MODEL	KW	VOLTS	BTUs	PH	AMPS	CFM	TEMP RISE	WT. (LBS)	PRICE EACH	OPTIONAL 25' POWER CORD	
										MFG MODEL	PRICE EACH
FES-1524-3E	15	240	51,195	3	36	800	45 °F	65	940	6/4 SO	176
FES-1548-3E	15	480	51,195	3	18	800	45 °F	65	940	12/4 SO	85
FES-3048-3A	30	480	102,390	3	36	1100	90 °F	83	1482	6/4 SO	176
FES-4548-3	45	480	153,585	3	54.2	2200	70 °F	125	2448	4/4 SO	180

OCH SERIES OUTDOOR / INDOOR RATED QUARTZ ELECTRIC INFRARED HEATERS

Heats solid objects, not the air!



- Listed for suspended, totally exposed (outdoor) and indoor spot heating applications
- Frosted Quartz Tube heating element (included)
- Finish: High-temp brown powder coated finish
- 60° Symmetric Heat Pattern
- Gold anodized Aluminum reflector and end caps
- Two 2' ft. long mounting chains and four S-Hooks included
- Can be surfaced mounted using the supplied mounting brackets
- Includes electrical enclosure
- Made in U.S.A.



MFG MODEL	CONNECTION TYPE	WATTS	VOLTS	BTUs	AMPS	Qtz. Tube Repl. Element	WT. (LBS)	PRICE EACH
OCH-46-120VCE	Corded	1500	120	5120	12.5	671-3784	11	199
OCH-57-208VCE		2000	208	6826	9.6	671-5061	13	234
OCH-57-240VCE		2000	240	6826	8.3	671-3786		

FSP SERIES PORTABLE FLAT PANEL EMITTER ELECTRIC INFRARED HEATERS



FSP-31 FSP-14 FSP-95 FSP-43

MFG MODEL	WATTS	VOLTS	PHASE	BTUs / HOUR	AMPS		WT. (LBS)	PRICE EACH
					1 PH	3 PH		
FSP-1412-1C	1450	120	1	4,947	12.1	N/A	17	539
FSP-3124-1	3150	240	1	10,749	13.13	N/A	23	633
FSP-4324-3	4300	240	1 or 3	14,972	17.91	10.36	32	814
FSP-4348-3	4300	480	1 or 3		8.96	5.18		
FSP-9524-3	9500	240	1 or 3	32,414	39.68	22.89	46	1128
FSP-9548-3	9500	480	1 or 3		19.79	11.44		



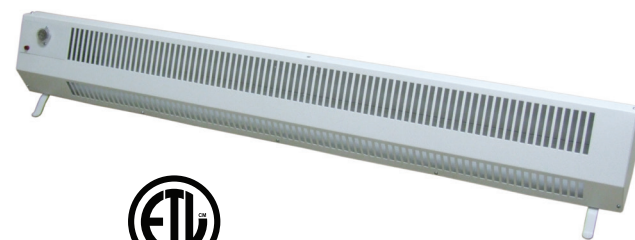
- High density medium wave radiant heat with 60° symmetrical heat pattern.
- Electrical enclosure included for direct wire installation.
- 25,000 hour element life expectancy.
- Approximately 78.5% efficient versus 50% for metal sheath type elements.
- Rugged flat panel emitter can be used in high vibration areas.
- L-brackets included for chain suspension or rigid mounting.
- Heavy duty wire guard mounted on long lasting gold anodized reflector.
- Shipped fully assembled.
- Made in U.S.A.



483 SERIES 120 VOLT PORTABLE BASEBOARD CONVECTION HEATER

- 1500 Watt convection heater
- Temperature control thermostat
- Manual reset type limit control
- Power on indicator light
- 6' long - 3 conductor cord
- Imported to TPI Corporation specifications

Width: 48"
Height: 5 1/4"
Depth: 7 1/2"



MFG MODEL	WATTS	MAX BTUs	VOLTS	AMPS	PHASE	WT. (LBS)	PRICE EACH
483 TM	1500	5120	120	12.5	1	13	92

5100 SERIES FAN FORCED SUSPENDED ELECTRIC UNIT HEATERS



Horizontal Discharge



Horizontal or Vertical Discharge Airflow

- Heavy gauge welded steel cabinet with powder-coated finish and control compartment housing a master terminal board with a hinged and latched access door, simplifying wiring, installation and maintenance
- Copper clad steel sheath element with continuously brazed steel fins formed to allow side draw through airflow
- Units equipped with automatic resetting type limit control.
- Adjustable louvers for directional air flow control
- Units with model numbers ending in CA are factory wired for low voltage controls
- Shipped fully assembled
- Made in U.S.A.

MFG MODEL	KW	VOLTS	PHASE	AMPS	CONTROL VOLTAGE	PRICE EACH
HF2B5105N	5	240	1 / 3	20.8 / 18.1	240	423
	3.7	208		12.1 / 10.4	208	
HF2B5107CA1L	7.5	240	1 / 3	27.1 / 31.3	24	652
	5.6	208		31.3 / 27.1		
HF2B5110CA1L	10	240	1 / 3	41.2 / 24.0	24	719
	7.5	208		36.1 / 20.8		
P3P5105CA1N	5	480	3	6.1	24	560
P3P5107CA1N	7.5			9.1		704
P3P5110CA1N	10			12.1		745

HEATER ACCESSORIES:

MFG MODEL	DESCRIPTION	MODEL SIZE / TYPE	WT. (LBS)	PRICE EACH
A5105	Mounting Brackets	3.3 KW to 5.0 KW	9	58
A5120		7.5 KW to 20.0 KW	13	70
T5100	Field Installed	SPST Line Voltage (Built-In) Stat	1	73
T5102	Thermostat	DPST Line Voltage (Built-In) Stat	1	99



3310 SERIES FAN FORCED WALL HEATER



- White powder coated 18-gauge steel front grill with rounded corners
- Steel block element design
- Built-in double pole thermostat, temperature range of 50°F - 90°F
- Automatic reset thermal limit
- Quiet, but proves a high 175 CFM output of down flow air
- Covers room size of 75-275 square foot
- Optional surface mounting frame & extenders available
- Made in U.S.A.

Designed for spot, supplement, and even primary comfort heating systems.

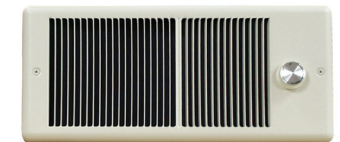


Where used:
Units are ideal for small, hard to heat areas; such as vestibule areas, bathrooms, hallways, offices, hotels, stairways, and many more!

MFG MODEL	WATTS	VOLTS	BTUs	AMPS	GRILL	ROUGH-IN	WT. (LBS)	PRICE EACH
E3313T2RPW	1500 / 750	120	5120 / 2560	12.5 / 6.25	15 3/8" Wide 20 3/4" High (18-gauge)	14 3/16" Wide 19 1/8" High 4" Deep	22	286
HF3315T2RPW	3000 / 2250 1500 / 1125	240 / 208	10240 / 5120	12.5 / 6.2 6.2 / 5.4				290
HF3316T2RPW	4000 / 3000 2000 / 1500		13648 / 6826	16.8 / 14.4 8.3 / 7.2				290

4300 SERIES FAN FORCED WALL HEATER

- White powder coated 20-gauge steel front grill with rounded corners
- Finned tubular steel element design
- Built-in double pole thermostat, temperature range of 50°F - 90°F
- Standard manual reset thermal limit
- Can be positioned to allow left, right, or top discharge, but not approved for ceiling mount applications
- Quiet, but provides 70 CFM output of down flow air
- Optional surface mounting frame & extenders available
- Made in U.S.A.



LOW PROFILE DESIGN
(With Thermostat)

MFG MODEL	WATTS	VOLTS	BTUs	AMPS	GRILL	ROUGH-IN	WT. (LBS)	PRICE EACH
HF4315T2RPW	1500 / 1125	240/208	5120 / 3840	6.3 / 5.4	16 3/4" Wide 7 7/8" High (20-gauge)	14 1/2" Wide 7 1/8" High 3 1/2" Deep	9	144
HF4320T2RPW	2000 / 1500		6826 / 5120	8.3 / 7.2				144
F4320T2RPW	2000	208	6826	9.6				144

